



Herringstones

WEEKLY STYLE GUIDE

HERRINGSTONES
IN PARIS

AUGUST WEEK 1
LATEST UPDATE: 8/6/24

THE POWER SUIT

HISTORY/VERBIAGE:

INTRODUCED IN THE 1920S BY COCO CHANEL - THE TERM "POWER DRESSING" BECAME POPULAR THEN.

KEY COMPONENTS OF THE POWER SUIT:

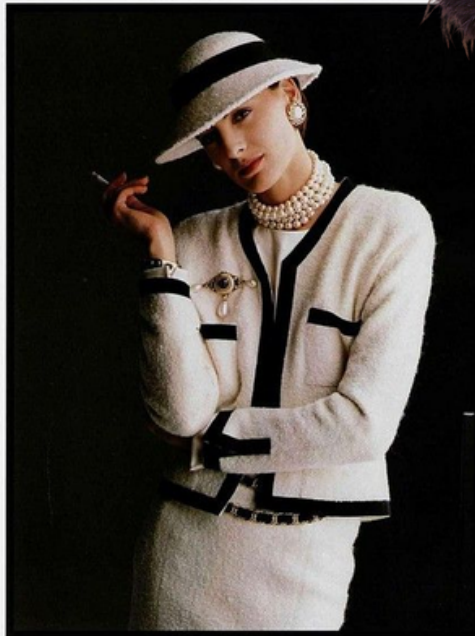
- TWEED SUIT
- FITTED SKIRT
- TAILORED, COLLARLESS JACKET
- MASCULINE HARDWARE (CUFFLINKS, GOLD BUTTONS, ETC)

THE SKIRT & JACKET ARE FITTED IN A WAY TO HUG THE FEMALE FORM

HISTORICALLY, THE JACKET & BUTTONS WERE TAKEN FROM THE MAN'S CLOSET & ADAPTED FOR A WOMAN TO WEAR



CHANEL



31, RUE CAMBON - PARIS 1^{er}



CHANEL A/W 2011





**CHANEL S/S
1991**



CHANEL FALL 1995

**LONGER, MORE
ACCENTUATED
JACKETS BECAME
POPULAR IN THE
1980S**



**CHANEL
SPRING 2019**



**THESE SUITS WERE
MADE ALSO SO THAT
THEY CAN BE WORN AS
SEPARATES: WHERE
THE JACKET MAKES FOR
A STATELY PIECE, AND
THE TAILORED SKIRT
CAN ELEVATE EVEN A
SIMPLE BLOUSE.**

EMBELLISHED TRIM



EMBELLISHED TRIMS GIVE YOUR SUIT THE DAZZLE IT NEEDS WITHOUT NEEDING EXTRA JEWELRY. ALTHOUGH, ADDING ON THE JEWELRY INSTANTLY ELEVATES THE LOOK.