



# Herringstones

WEEKLY STYLE GUIDE

*Demure*  
& CHIC  
COLLECTION

SEPTEMBER WEEK 1  
LATEST UPDATE: 8/27/24

# WHAT'S NEW THIS WEEK

*HerringStones*

DEMURE & CHIC  
Launching Wednesday 9/4



# LAUNCHING 9/4

# METALLICS

## VERBIAGE:

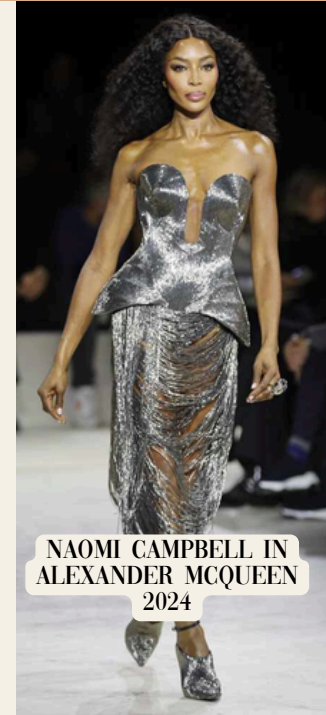
**WE'RE SEEING A SURGE OF METALLICS AGAIN THIS WEEK BECAUSE METALLICS AREN'T GOING ANYWHERE ANYTIME SOON! IT'S A FALL STAPLE THIS SEASON!**

**SILVER & GOLD ARE INCORPORATED INTO MANY TEAMS SCHOOL COLORS = GREAT GAME DAY PIECES!**

**METALLICS ARE THE ANSWER TO MONOCHROMATIC LOOKS, ADDING THE RIGHT TOUCH OF LOUD, BRASSY GLAMOUR TO YOUR OUTFIT**

**A METALLIC SHOE IS ALWAYS A GOOD IDEA BECAUSE IT ADDS A GOLDEN OR SILVERY OR "SHIMMERY" BOUNCE TO YOUR STEP**

**OPT FOR METALLIC SKIRTS, PANTS, OR BLOUSES THAT CAN BE MIXED AND MATCHED WITH YOUR EXISTING WARDROBE STAPLES.**



NAOMI CAMPBELL IN ALEXANDER MCQUEEN 2024



TOM FORD 2024

GIUSEPPE HEELS \$850



GIVENCHY METALLIC SLINGBACK \$950



USED FOR CLOTHING & ACCESSORIES ON THE RUNWAY



## VERBIAGE:

**A MODERN SENSE OF REFINED GLAMOUR HAS EMERGED WITH NEUTRALS**

**NEUTRALS WITH ANY KIND OF PRINT (FLORALS, ANIMAL PRINT) WILL REDEFINE YOUR NEUTRAL GAME**

**THE CLASSIC “OLD MONEY” LOOKS ARE BACK AND BETTER THAN EVER. THESE ARE YOUR CLOSET STAPLES, BUT ELEVATED.**

**WE ARE SEEING NEUTRALS PLAY OUT WITH GLAMOROUS EVENINGWEAR THIS SEASON, ALONG WITH THE CASUAL DAY WEAR.**

**THERE’S BEEN A SHIFT, LEANING MORE TOWARDS ELEVATED SILHOUETTES (A-LINE, FITTED, & SHIFT DRESSES)**

**THERE’S BEEN A SHIFT, LEANING MORE TOWARDS ELEVATED SILHOUETTES (A-LINE, FITTED, & SHIFT DRESSES)**

**ELEVATE YOUR CLASSIC “BLACK + WHITE” COLORWAY TO A “BLACK + CREAM COLORWAY FOR A FRESH NEW NEUTRAL LOOK**

# ELEVATED NEUTRALS



# CUFFED JEANS

## VERBIAGE:

CUFFED JEANS ARE LIKE A BLAST FROM THE PAST (BIG IN THE 80S & 90S), BUT WITH A MODERN TWIST.

WHEN IT COMES TO STYLING CUFFED JEANS, THE OPTIONS ARE ENDLESS.

THE CUFFED, WIDE LEG SILHOUETTE ELONGATES YOUR LEGS, ESPECIALLY WHEN STYLED TO BALANCE THE JEANS' SHAPE.

PAIR CUFFED JEANS WITH A SLEEK BLAZER AND SOME BALET FLATS FOR AN EFFORTLESSLY CHIC LOOK.

CHANNEL YOUR INNER COOL GIRL BY STYLING YOUR CUFFED JEANS WITH YOUR FAVORITE SNEAKERS AND A COZY KNIT SWEATER FOR FALL

PAIR THEM WITH A CRISP, BUTTON UP SHIRT AND SOME POLISHED ACCESSORIES FOR A LOOK THAT'S EQUAL PARTS PROFESSIONAL AND STYLISH. WORKWEAR CHIC AT ITS FINEST.



RAG & BONE  
\$268

VERONICA BEARD  
\$328

AGOLDE  
\$238